



Design Toolbox™

Installation Manual & User Guide





Index

Introduction.....	2
Installation Manual.....	3
I. Downloading	3
II. Installation & Activation	3
User Guide	5
I. Home screen	5
A. Main Menu	5
B. Available Ranges / Solution Categories –	6
C. Fan Requirements-	6
D. Motor options –	6
II. Technical Details Screen	7
A. Performance Charts	7
B. Technical Information	7
C. Acoustics/Noise Information	7
D. Technical Screen Menu	8



Introduction

The intent of this selection tool is to help you find the best solution that meets your application requirements. This tool contains different categories of fan/blower solutions offered by Regal Beloit globally. By using this tool, you can easily find the fan/blower solution based on minimum input parameters and then view the airflow/noise data for the selected product. This will help the design engineers in finding the perfect match for their application by reviewing the different operating points and the efficiency, flow rate, static pressure, etc. at these points.

The airflow/noise data in this tool have been measured in our technologically advanced labs and combined with an approximation algorithm to get the various performance data including the static pressure vs. volume flow rate, input power vs. volume flow rate and efficiency vs. volume flow rate .

Installation Manual

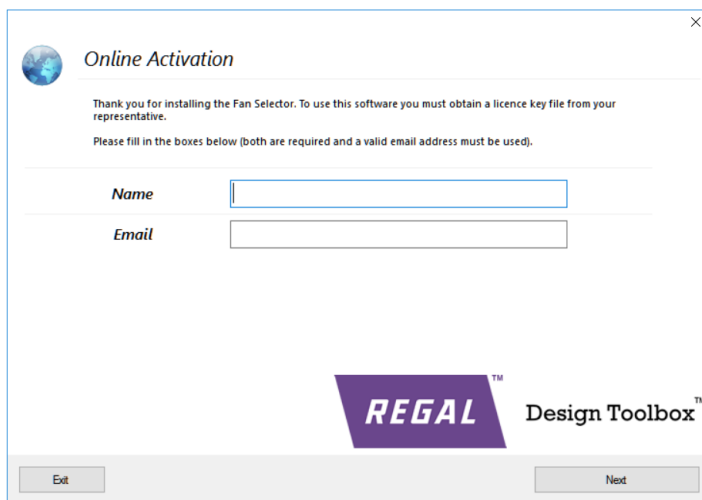
I. Downloading

You can download the software from https://www.genteqmotors.com/Products/OEM/Dec_Star/ under the Software tab.

Please note that you need to be logged in as a member on the website to be able to download the file.

II. Installation & Activation

1. Run the setup file "DesignToolbox.exe"
2. You will be asked to enter in your name and e-mail to activate the software. Enter the details and Click on "Next".



The "Online Activation" dialog box features a globe icon and a close button. It contains a thank-you message and instructions to obtain a license key. Below this, there are two input fields labeled "Name" and "Email". At the bottom, there is a logo for "REGAL Design Toolbox" and two buttons: "Exit" and "Next".

Online Activation

Thank you for installing the Fan Selector. To use this software you must obtain a licence key file from your representative.

Please fill in the boxes below (both are required and a valid email address must be used).

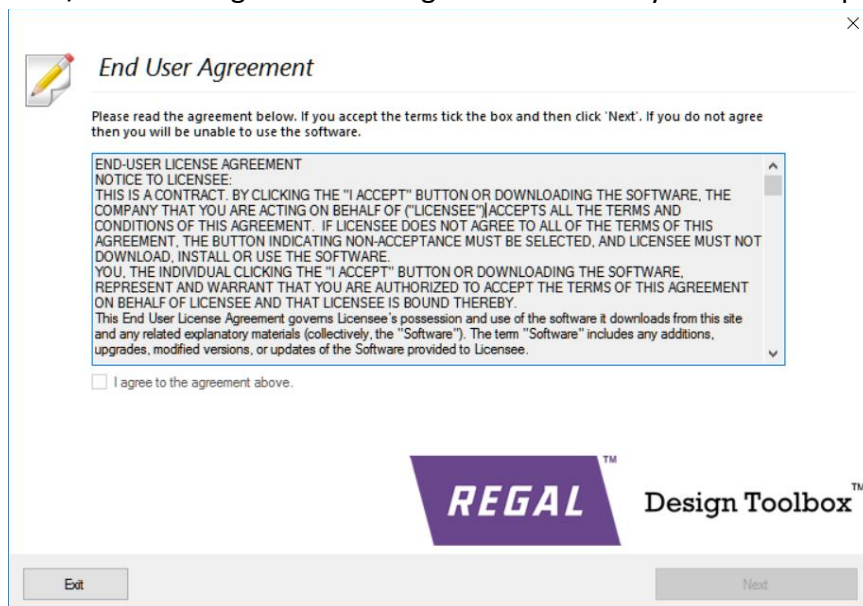
Name

Email

REGAL Design Toolbox

Exit Next

3. Before proceeding further, you need to accept the End-User License Agreement. You will have to read/scroll-through the entire agreement before you could accept the agreement.



The "End User Agreement" dialog box includes a notepad icon and a close button. It prompts the user to read the agreement and tick a box to accept. A scrollable text area contains the full "END-USER LICENSE AGREEMENT" text. At the bottom, there is a checkbox for agreement, a logo for "REGAL Design Toolbox", and "Exit" and "Next" buttons.

End User Agreement

Please read the agreement below. If you accept the terms tick the box and then click 'Next'. If you do not agree then you will be unable to use the software.

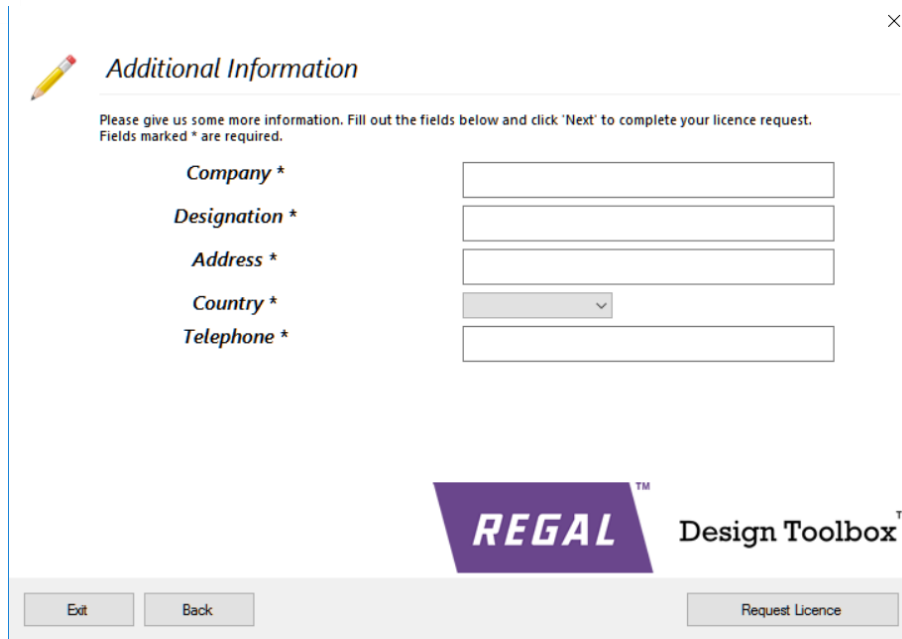
END-USER LICENSE AGREEMENT
NOTICE TO LICENSEE:
THIS IS A CONTRACT. BY CLICKING THE "I ACCEPT" BUTTON OR DOWNLOADING THE SOFTWARE, THE COMPANY THAT YOU ARE ACTING ON BEHALF OF ("LICENSEE") ACCEPTS ALL THE TERMS AND CONDITIONS OF THIS AGREEMENT. IF LICENSEE DOES NOT AGREE TO ALL OF THE TERMS OF THIS AGREEMENT, THE BUTTON INDICATING NON-ACCEPTANCE MUST BE SELECTED, AND LICENSEE MUST NOT DOWNLOAD, INSTALL OR USE THE SOFTWARE.
YOU, THE INDIVIDUAL CLICKING THE "I ACCEPT" BUTTON OR DOWNLOADING THE SOFTWARE, REPRESENT AND WARRANT THAT YOU ARE AUTHORIZED TO ACCEPT THE TERMS OF THIS AGREEMENT ON BEHALF OF LICENSEE AND THAT LICENSEE IS BOUND THEREBY.
This End User License Agreement governs Licensee's possession and use of the software it downloads from this site and any related explanatory materials (collectively, the "Software"). The term "Software" includes any additions, upgrades, modified versions, or updates of the Software provided to Licensee.

☐ I agree to the agreement above.

REGAL Design Toolbox

Exit Next

4. Enter the details about yourself and click on “Request License”.



Additional Information

Please give us some more information. Fill out the fields below and click 'Next' to complete your licence request.
Fields marked * are required.

Company *

Designation *

Address *

Country *

Telephone *

REGAL TM **Design Toolbox** TM

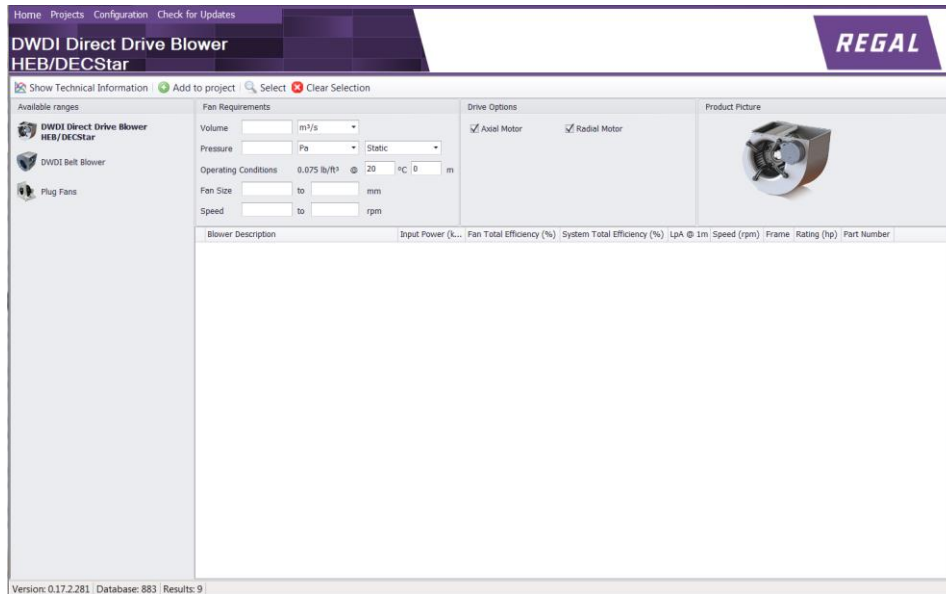
5. Your request will be processed by the server and you should now be able to use the software.

Please note that your computer needs to be connected to the internet during the installation/activation process.

User Guide

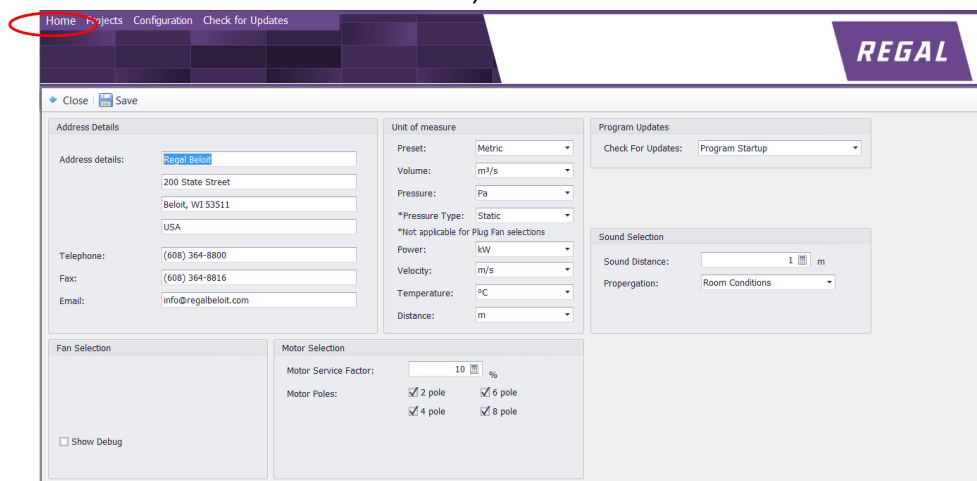
This section will walk you through the different screens of the software and give you an idea of the available features.

I. Home screen



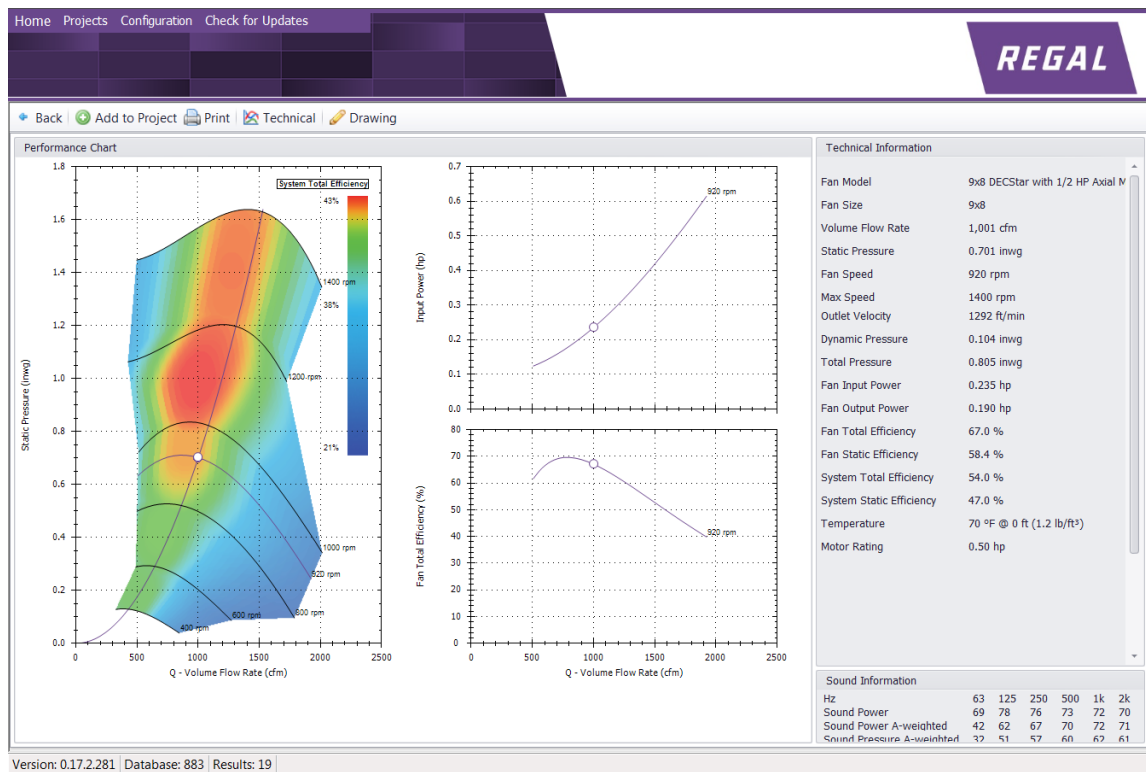
A. Main Menu

- Home – Redirects you to the Home Screen
- Projects – Check the Projects section (insert hyperlink) in Technical Details Screen
- Configuration – Select the different defaults for the software here. For the unit of measure, you can select either the Metric or Imperial Unit system based on your requirement. You can also select a specific unit for each parameter (volume, pressure, etc.). Once you have made selections from the different sections, click on Save.



- Check for Updates – This will check for any available software updates and update the software. You might be prompted restart the application at this point.

II. Technical Details Screen



Select one of the blower solutions from the list by double-clicking on it.

On the Technical Details Screen, you can view the following –

A. Performance Charts

- Volume Flow Rate vs. Static pressure at different RPMs – In this chart, you have the option to dynamically change the operating point to view the corresponding technical details.
- Volume Flow Rate vs. Input Power
- Volume Flow Rate vs. Fan Total Efficiency

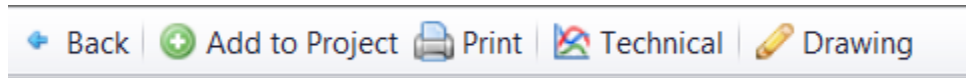
B. Technical Information

You can view the other Technical information including fan speed, max. speed, efficiency, etc. These values will dynamically change when you move the operating point on the Flow rate vs. Static pressure graph.

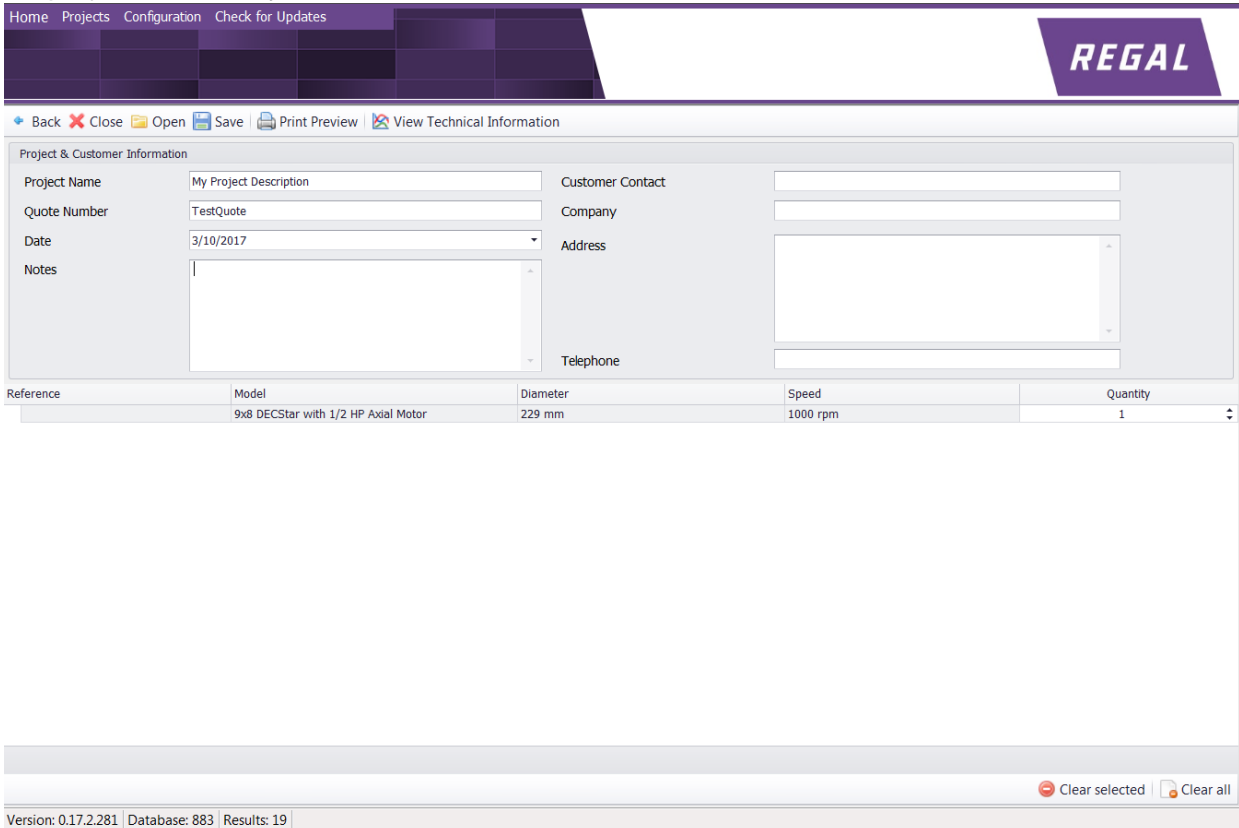
C. Acoustics/Noise Information

This section shows the sound power and pressure levels at different frequencies. This also changes dynamically by moving the operating point.

D. Technical Screen Menu



- a. Add to project – You can add a selected fan/blower as a project file and save it for future reference. After entering the details, click on “Save. You will be prompted to enter a name for the project file which can then be saved in your local document library. For future reference, you can open the project file directly and view the details on the software.

The image shows the REGAL software interface. At the top is a navigation bar with 'Home', 'Projects', 'Configuration', and 'Check for Updates'. Below this is a toolbar with icons for 'Back', 'Close', 'Open', 'Save', 'Print Preview', and 'View Technical Information'. The main area is titled 'Project & Customer Information' and contains several input fields: 'Project Name' (My Project Description), 'Quote Number' (TestQuote), 'Date' (3/10/2017), 'Notes' (a text area), 'Customer Contact', 'Company', 'Address', and 'Telephone'. Below these fields is a table with the following data:

Reference	Model	Diameter	Speed	Quantity
	9x8 DECStar with 1/2 HP Axial Motor	229 mm	1000 rpm	1

At the bottom of the interface, there is a status bar showing 'Version: 0.17.2.281 | Database: 883 | Results: 19' and two buttons: 'Clear selected' and 'Clear all'.

- b. Print – This will create a single document with the performance charts, technical information, acoustic data and the drawing from the selection that you made.
- c. Technical – This will redirect you to the main Technical Screen.
- d. Drawing – This shows the drawing of the blower along with the dimensions.